

Defending the Common School Fund, AGAIN

WEMTA Legislative Committee



WEMTA's Legislative Committee

- Public Affairs Counselors

- Blumenfeld & Associates
- Michael Blumenfeld
- Erin Fabrizius

- WEMTA Board Members

- Emily Dittmar, Chair
- Andy Mayer
- Kay Benning
- Caroline Akervik
- Jessica Brogley
- Carrie Wuensch-Harden

- WEMTA Members

- Brittany David
- Malena Koplin



Why Advocate?

837 Groups Are
Registered to
Lobby in Wisconsin



The Legislature is Adjourned, but It's More Important Than Ever to Advocate

- All BCPL Commissioners Are up for Election
 - A.K.A. The Common School Fund is on the ballot

- Record-breaking turnover in the State Legislature
 - 1 in 4 seats are open!



Elections Matter!

November 8,
2022



Key Races

Board of Commissioners of Public Lands (BCPL)

- Wisconsin Attorney General
- Wisconsin Secretary of State
- Wisconsin State Treasurer



Why You Should Care About BCPL Races

- They oversee the \$1.4 billion Common School Fund
- CSF is the only dedicated source of K-12 school library funding
- They approve **tens of millions of dollars** worth of BCPL Loans to local governments and schools every year, for things like:
 - Public Library improvements and construction
 - Bookmobiles
 - Improving school buildings
 - Buying fire trucks and snow plows
 - So much more!



WI Attorney General



Attorney General Josh Kaul
(D-Madison)

Incumbent



Fond du Lac DA Eric Toney
(R-Fond du Lac)



WI Secretary of State



Secretary of State Doug La Follette
(D-Madison)

Incumbent



Rep. Amy Loudonbeck
(R-Canton)



WI State Treasurer



Mayor Aaron Richardson
(D-Fitchburg)



Attorney John Leiber
(R-Cottage Grove)



WEMTA Voter Guide

WEMTA BCPL VOTER GUIDE



Vote: August 9, 2022



Importance of Governor and State Legislative Races

- Legislature introduces thousands of bills every session, Governor can sign or veto
- State Budget sets K-12, broadband funding

Record Legislative Turnover

- Around 25% of Wisconsin's 132 state legislators will be **NEW** next session



Examples of Legislation this Session

- Limit access to “harmful materials” on public access school computers
- Make State Superintendent, Secretary of State, State Treasurer political appointees



What YOU Can do to advocate for school libraries and students!



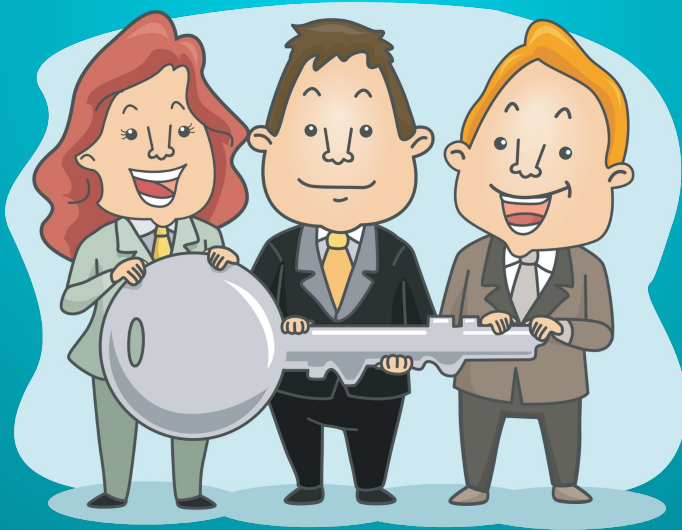
Reach out to candidates and ask them where they stand on issues like the

- Common School Fund
- Broadband Expansion
- Freedom to Read



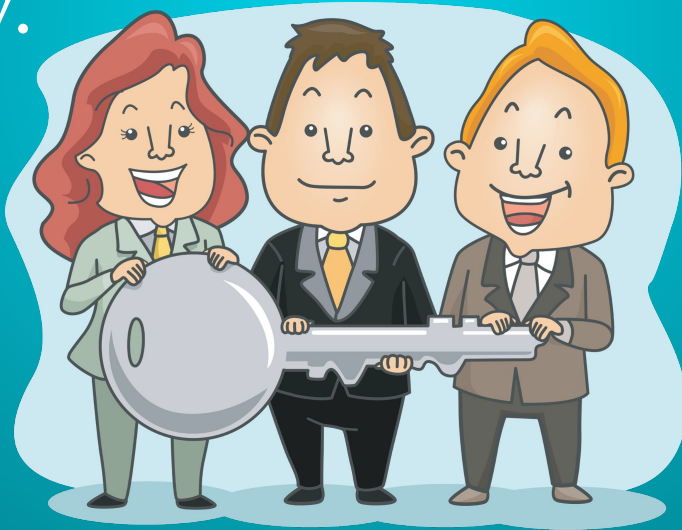
What You Can Do!

- Attend candidate forums or town halls and attempt to ask any of the above questions!



What You Can Do!

- Don't be shy about introducing yourself to candidates if you bump into them in the community.



How to Communicate Your Ask

- Who are you?
- What is your issue?
- Why does this matter?
- What's your ask?



Connect Your Story to Your Ask

- Candidates and Lawmakers want to hear from **REAL PEOPLE**--like you
- Share Stories and Examples About:
 - Your role in education
 - Importance of the Common School Fund
 - Broadband access issues for students



Example 1:

Who are you?

- A school librarian who lives in your district!

What is your issue?

- The only dedicated funding my school library receives is from the CSF. It ensures that all students have access to high-quality informational resources and educational technology.

Why does this matter?

- Well-stocked school libraries correlate with higher reading scores.

What's your ask?

- If elected, what will you do to ensure the continued statutory use of the Common School Fund as envisioned by our founding fathers?

Example 2:

- Who are you?
 - A school librarian who lives in your district!
- What is your issue?
 - School districts throughout Wisconsin are facing an unprecedented number of requests to remove books from school libraries and classrooms.
- Why does this matter?
 - Not every book is for every reader, but every reader will find an appropriate book in the school library. Parents have the right to set reading parameters and restrictions for their own children; however, no one person or group has the right to make choices for others.

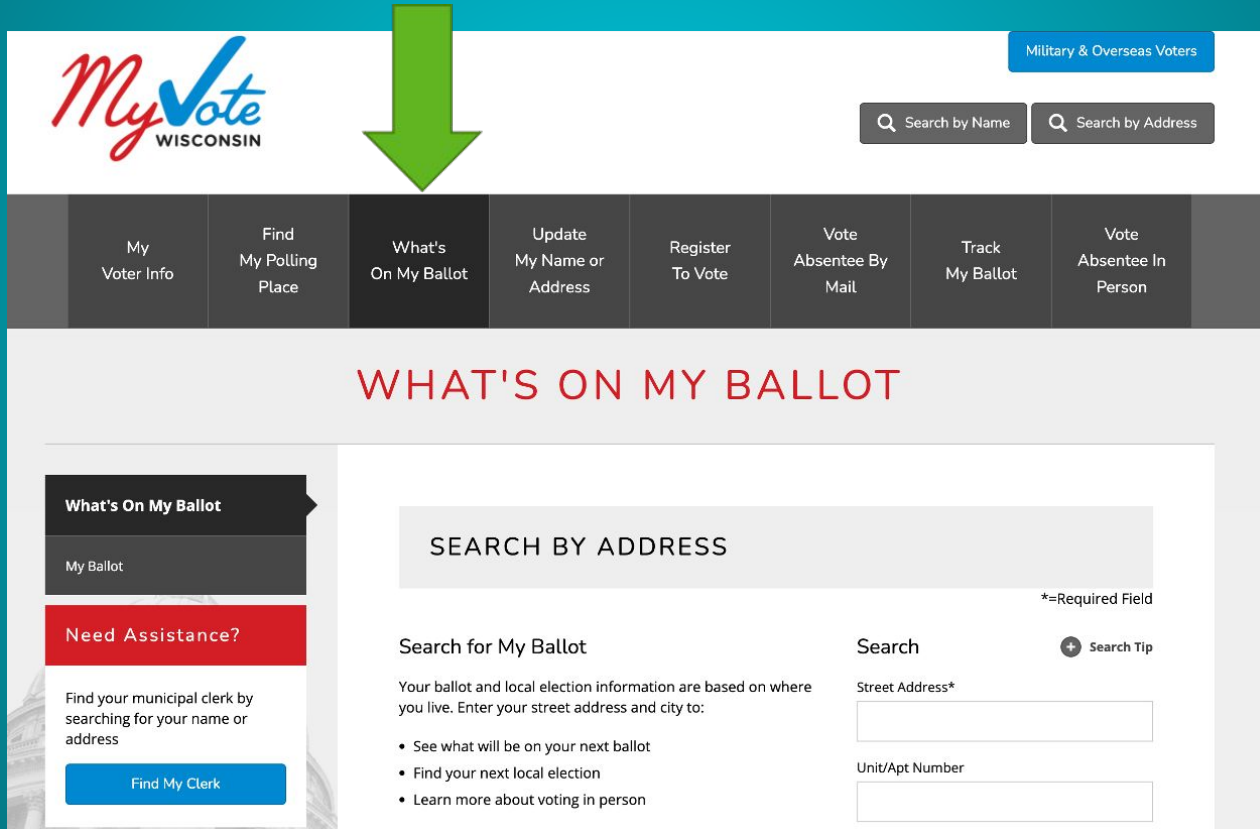
What's your ask?

- Trust the professional expertise of school librarians in selecting materials and maintaining school library collections.

VOTE!

**November 8,
2022**

To Find out Who Is On Your Ballot: myvote.wi.gov



The screenshot displays the myvote.wi.gov website interface. At the top left is the MyVote WISCONSIN logo. A green arrow points to the 'What's On My Ballot' menu item in the navigation bar. The navigation bar includes: My Voter Info, Find My Polling Place, What's On My Ballot (highlighted), Update My Name or Address, Register To Vote, Vote Absentee By Mail, Track My Ballot, and Vote Absentee In Person. A 'Military & Overseas Voters' button is in the top right. Search boxes for 'Search by Name' and 'Search by Address' are also present.

WHAT'S ON MY BALLOT

What's On My Ballot

My Ballot

Need Assistance?

Find your municipal clerk by searching for your name or address

[Find My Clerk](#)

SEARCH BY ADDRESS

*=Required Field

Search for My Ballot

Your ballot and local election information are based on where you live. Enter your street address and city to:

- See what will be on your next ballot
- Find your next local election
- Learn more about voting in person

Search [+ Search Tip](#)

Street Address*

Unit/Apt Number

Questions and Contact Info

- Emily Dittmar
 - Legislative@wemta.org

